The background of the entire slide is a close-up, detailed view of a wood grain. The grain is highly textured, showing concentric growth rings in various shades of brown, tan, and dark grey. The pattern is organic and complex, with some areas showing more pronounced, wavy lines.

Uni_one system
The new era of wood-aluminium



Uniform Spa

MINERBE Headquarters – Verona – Total area 70.000 m² Built area 27.000 m²



Uniform Group

-  **Headquarters**
-  **Foreign Branches**
-  **Foreign Agencies**

- Foreign Branches
- SPAIN
 - FRANCE
 - ROMANIA
 - ENGLAND

Founded in 1988, today Uniform Group is present in several European countries with production and commercial sites.

TRADITIONAL SYSTEMS: WOOD-ALUMINUM AND WOOD-BRONZE

Frame protection outside and enhanced thermal-acoustic performance.



UNITHERM CURTAIN WALLS

Vertical, inclined, and pyramid facades with different openings. The structure is made by engineered oak wood with an upright and transverse grid. External profiles are completed with different materials: aluminum, bronze or wood.



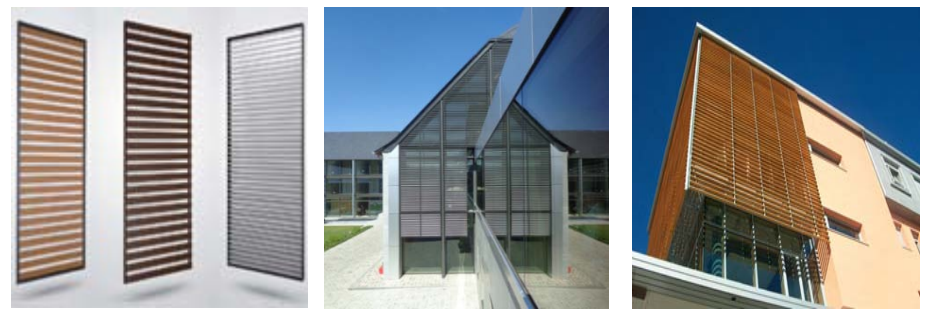
UNI_ONE

Technology and design for a comfortable environment and a "co-ordinated look" in line with furniture and door finishes!



SHADING SYSTEMS WITH ALUMINUM, XPS AND WOOD (BRISE-SOLEIL)

Reduction of solar irradiation: durability of aluminum structure and energy efficiency of XPS' slats.



uni_one

Multi-material windows and doors with
three elements in perfect balance:

**AESTHETIC, NATURAL AND
TECHNOLOGY**



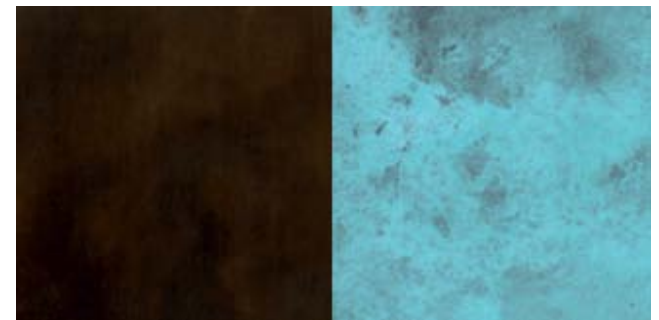


Inside, the warmth of
wood





**Outside the protection
and durability of aluminum
and bronze**





Together to make a new window!

uni_one
materials



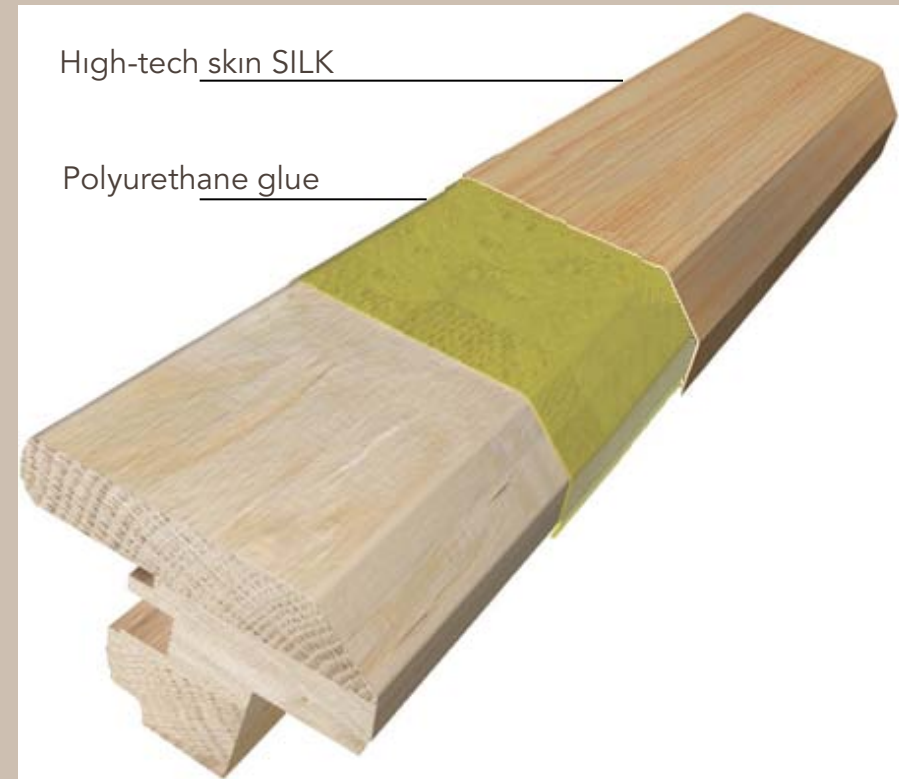
The **UNI_ONE** core

Structure made by engineered pine, optimum material to achieve high values of acoustic and thermal insulation.



SILK high-tech skin

Silk is a latest generation hi-tech veneer ecological, PVC and formaldehyde free and easy to maintain which ensures high resistance to abrasions, scratches, stains, mould and colour stability on exposure to UV light.





HIGH-TECH SKIN **SILK**

unique and precious like **SILK**

Mat Lacquer Finish: *uniformity, resistance, recoverability.*

 **SILK** LACCATO OPACO



WHITE LACQUER
MSxL1

IVORY LACQUER
MSxL2

DOVE-GREY LACQUER
MSxL3



HIGH-TECH SKIN **SILK**

unique and precious like **SILK**

Open-grain Lacquer Finish: *dynamism, strength, sensuality*



SILK LACCATO A PORO APERTO





HIGH-TECH SKIN **SILK**

unique and precious like **SILK**

Oak Wood Effect: *natural, strong, three-dimensional*

SILK LEGNO ROVERE



GREY OAK
MSxR1



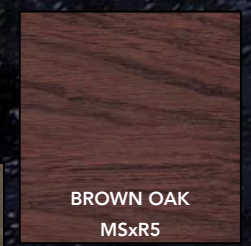
SAND OAK
MSxR2



NATURAL OAK
MSxR3



CHARCOAL GREY OAK
MSxR4



BROWN OAK
MSxR5




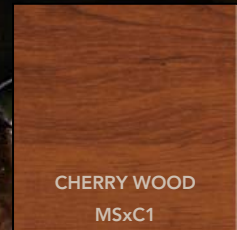


HIGH-TECH SKIN **SILK**

unique and precious like **SILK**

Ash And Cherry Wood Finish: *elegance, strength, refinement*

 **SILK** LEGNO FRASSINO
e CILIEGIO





HIGH-TECH SKIN **SILK**

unique and precious like **SILK**

SILK veneer from the tactile point of view

- Three-dimensional surface.
- Synchronized grain texture.
- Tactile sensation to touch planed wood or silk.

Sensory emotion extremely charming

The benefits of **SILK** for the **customer**:

- Extremely **durable** material, **easy to maintain** and **restore** if necessary.
- **The natural warmth of wood** inside the house.
- Refined finishes **in harmony with furnishings** and **doors** style.
- **Three-dimensional, dynamic, sensory** effect.
- **Ready-to-use bars**, sanding and painting are not necessary.



External protection
ALUMINUM
and
BRONZE



The benefits of **ALUMINUM / BRONZE** for the **customer** :



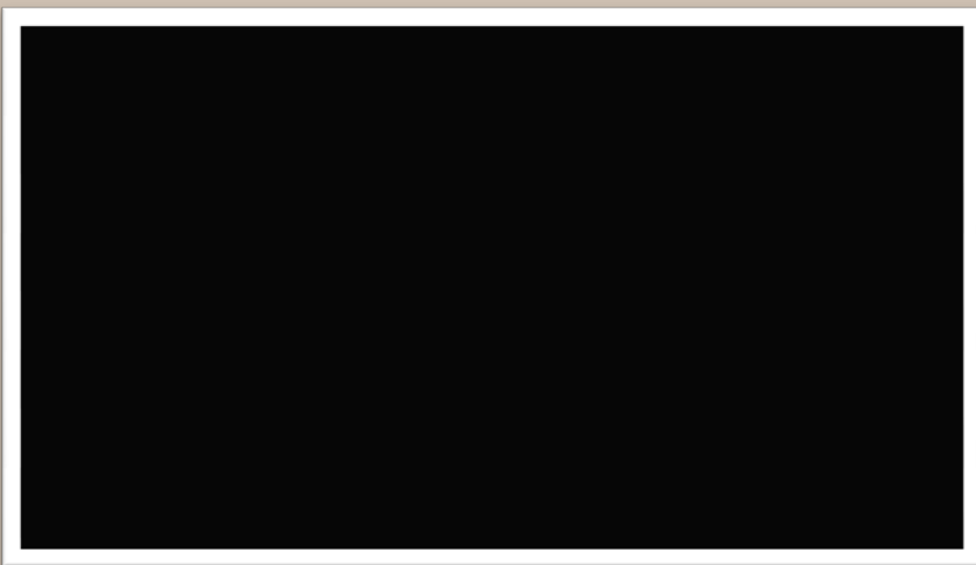
- **Avoid expensive maintenance of window**, enhancing water tightness and wind resistance.
- The aluminum frames painting is done after welding, ensuring **invisible joints and perfectly sealed corners**, much improving the aesthetics of the finished product.
- Aluminum painting is done according to **Qualicoat Seaside** standard.
- The connecting system of aluminum corner blocks glued and crimped is used for **oxidized, decorative wood and metal frames**.

uni_one[■]

construction technology


UNI_ONE SYSTEM WITH
90 AND **45 DEGREES**
CORNER JUNCTION

CNC MC-900



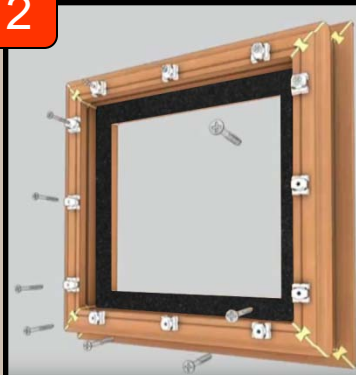
UNI_ONE ASSEMBLY SEQUENCE

1



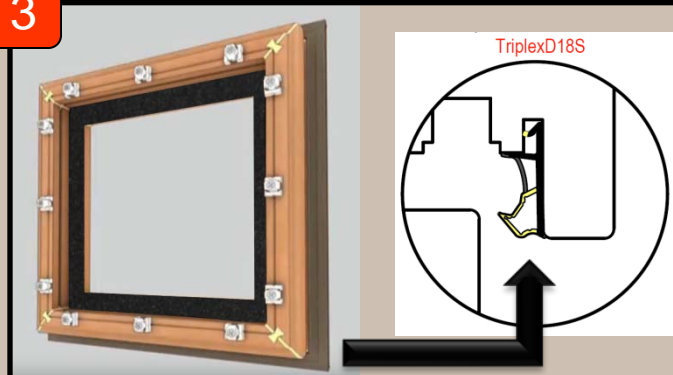
POSITIONING
CLIPS

2



FIXING CLIPS
TROUGH SCREW

3




TRIPLEXD18S PERIMETRAL GASKET
APPLICATION

4



POSITIONING OF GLASS
DISTANCERS

5



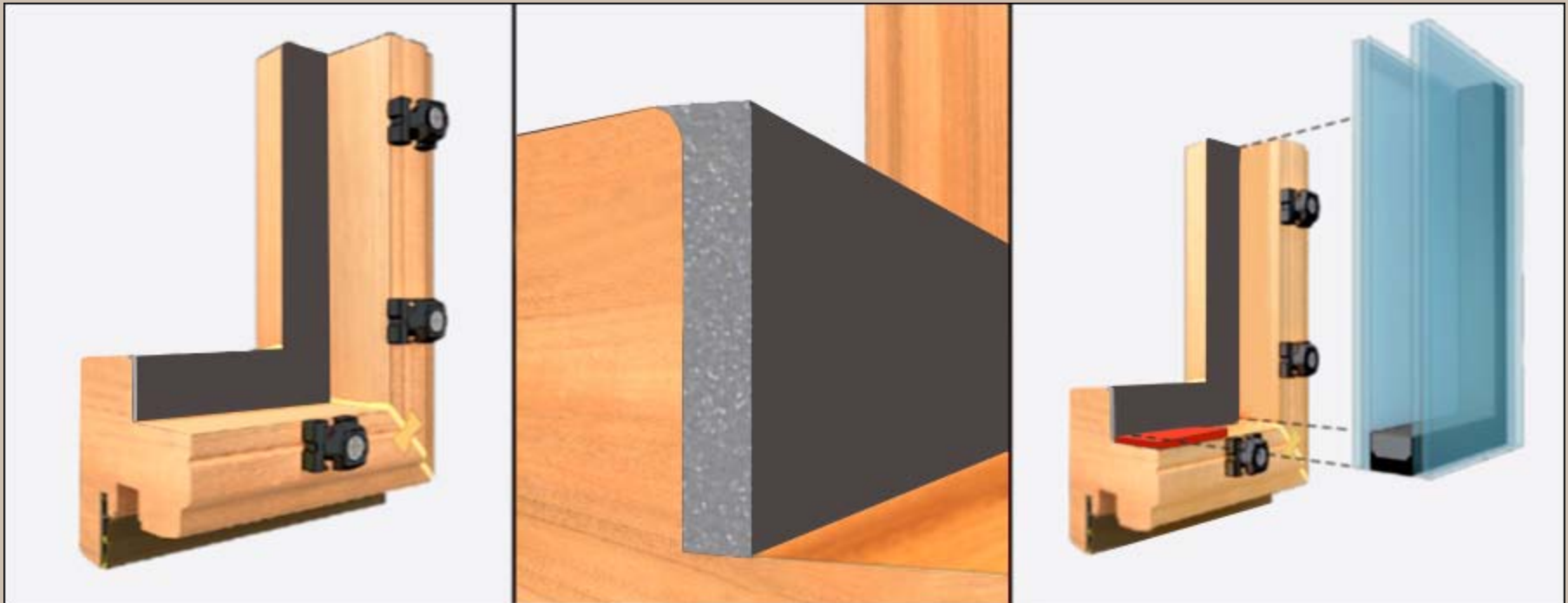
GLASS POSITIONING
AND CENTERING

6

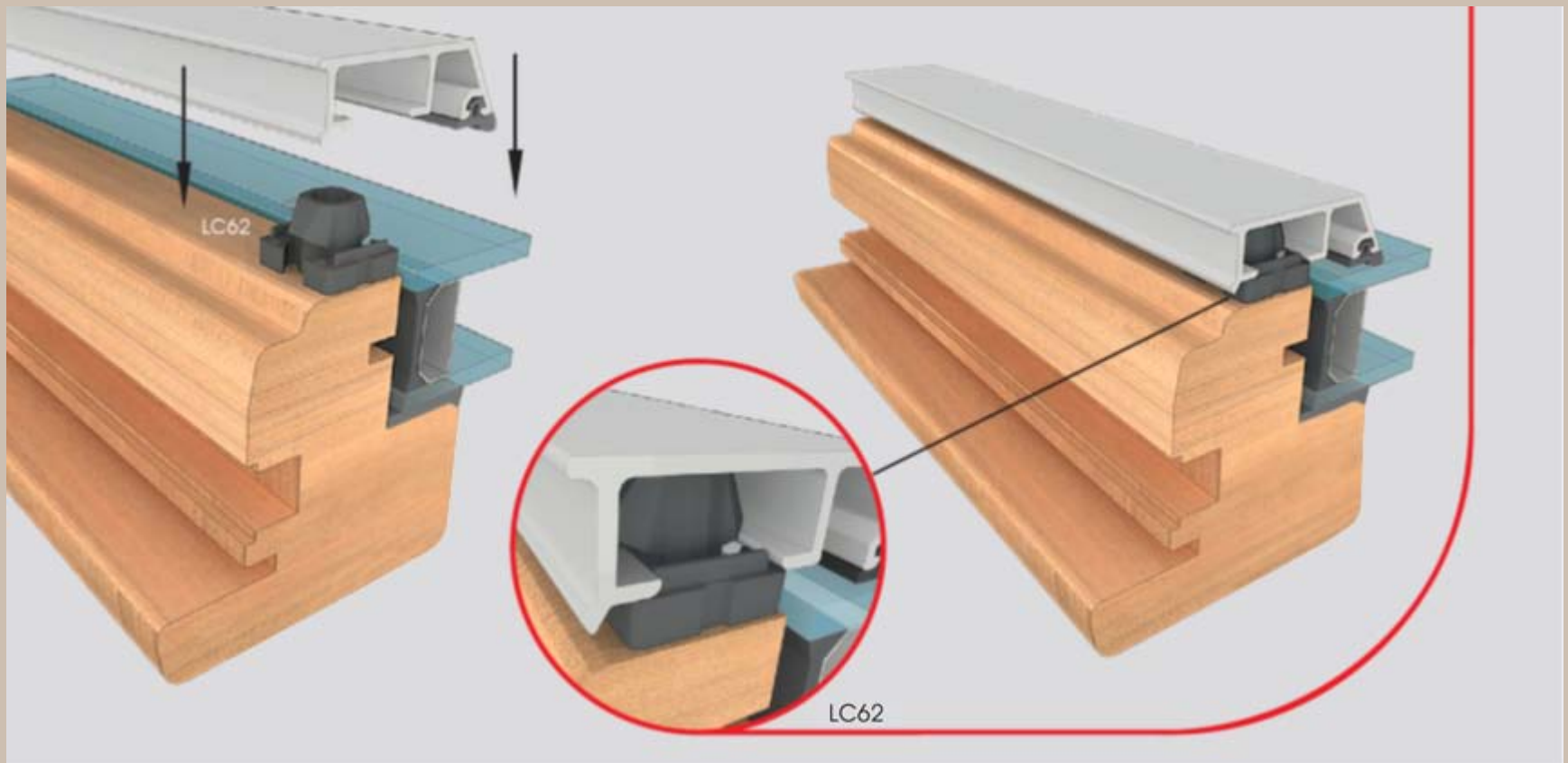


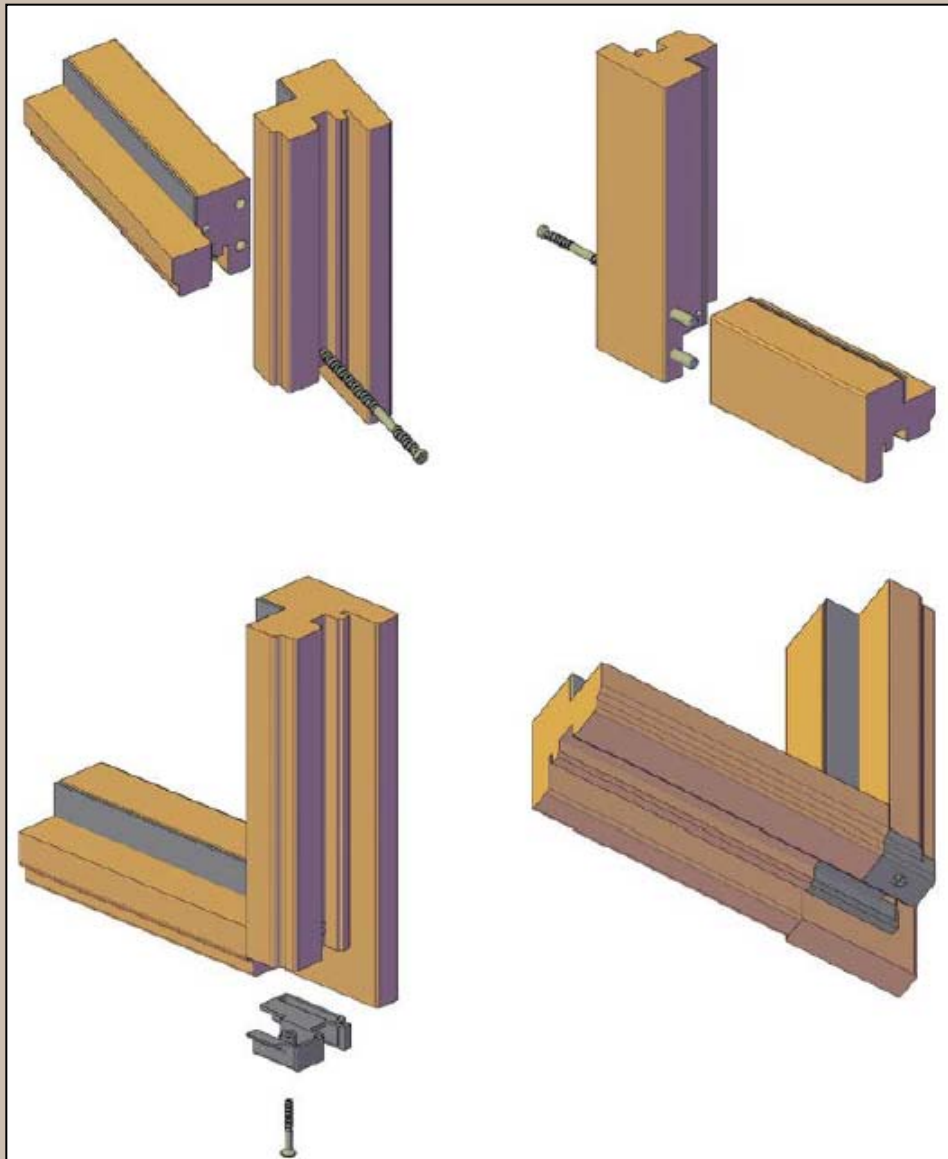
ALUMINUM FRAME AND
CLIPS ASSEMBLY

Structural bonding to ensure solid rigidity of sash



Application of external aluminum profiles by HIDDEN CLIPS





90 degree corners are mechanically assembled by screws and plugs for a perfect result on finished bars.

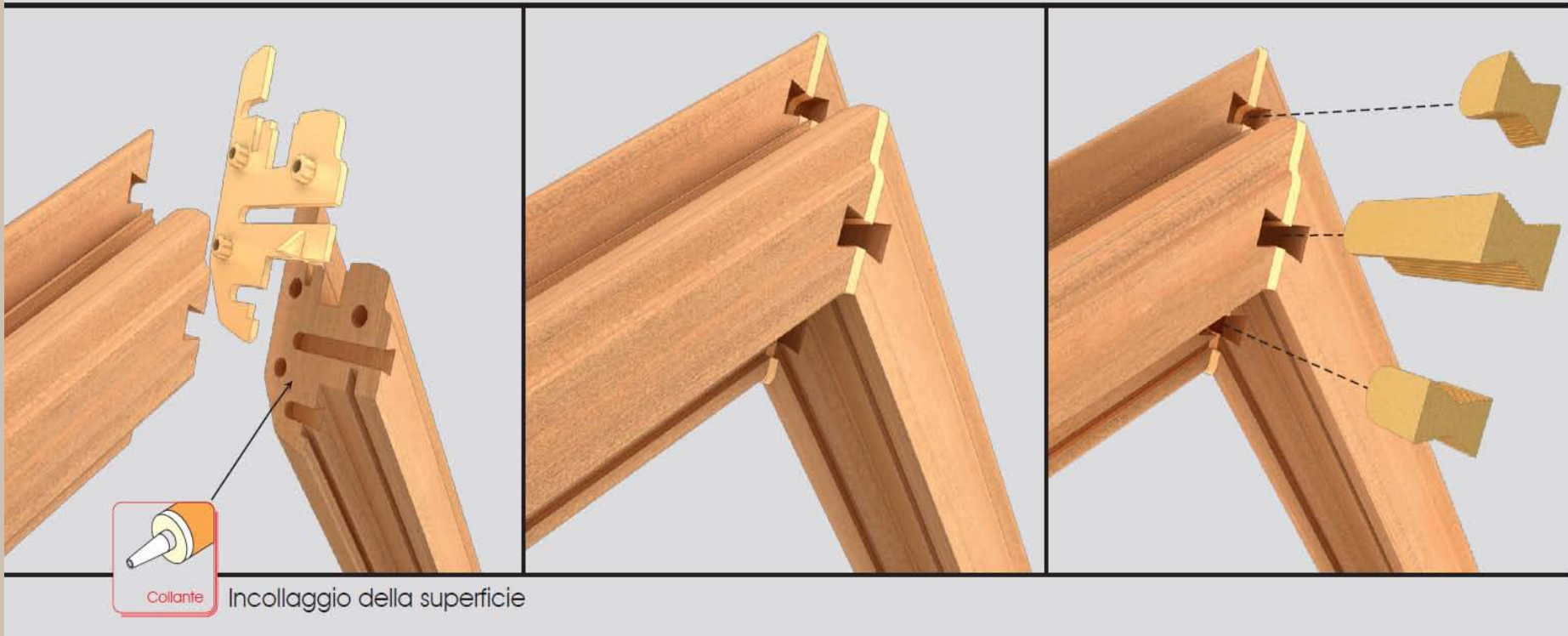
Simple and durable assembly!

90 degree working process for decorative purposes

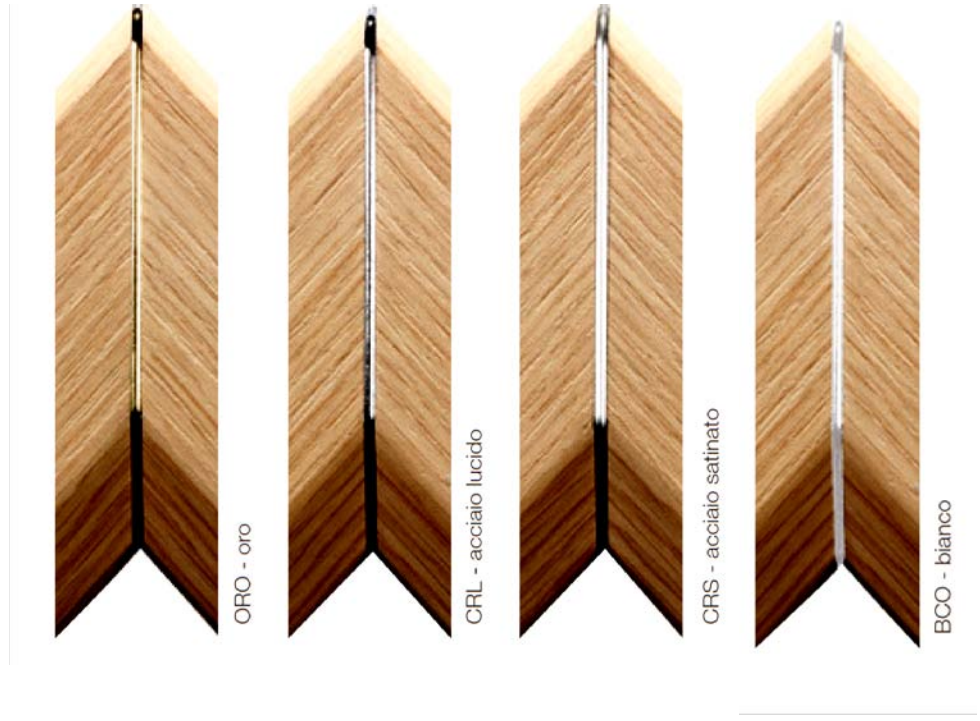
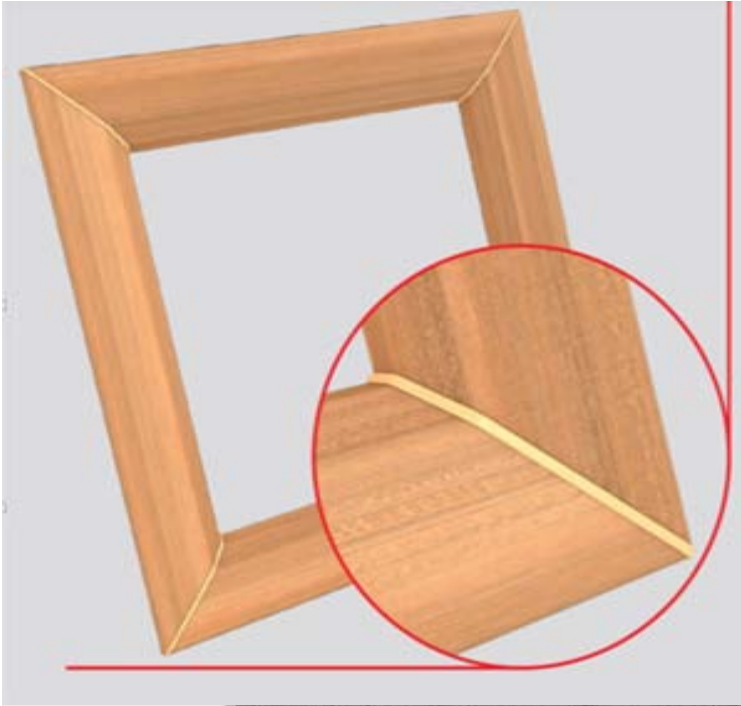


The traditional aesthetic of mortice and tenon joint
is created through a 2mm gap

45 degrees angles are fitted with a **PATENTED** insert that joins the edges perfectly (Hoffman keys).

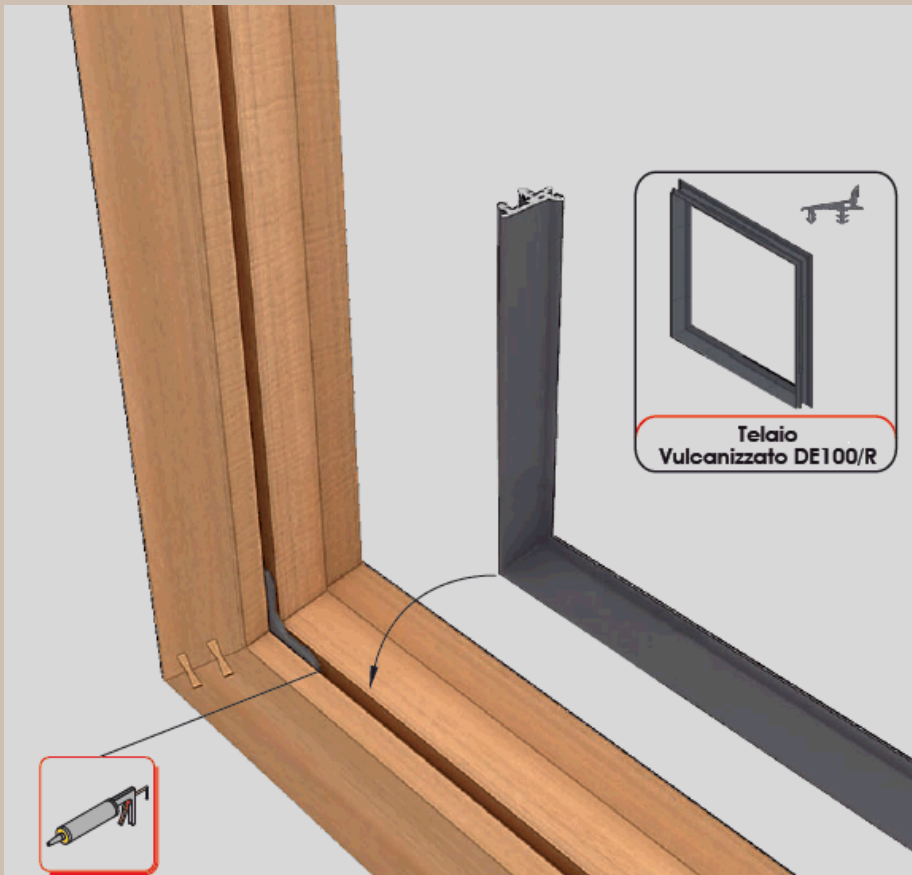


Decorative insert for 45 degrees corner



The insert is available with different finishes in order to be matched with the wood finish or handles and hinges.

Two standard gaskets:
internal gasket and
vulcanized frame gasket.



uni_one

Test results

AIR PERMEABILITY CLASS 4 — ACHIEVED THE HIGHEST CLASSIFICATION

With a wind speed of 75 mph: no air leakage, no draughts, thus, a warmer and quieter, more comfortable atmosphere and greater energy saving.

A lighthouse on a rocky island with waves crashing against its base. The lighthouse is white with a black lantern room. The water is a deep blue, and the waves are white and foamy. The sky is overcast.

WATER TIGHTNESS CLASS E 1050: EXCEEDED THE HIGHEST CLASSIFICATION

No leakage when the glass is completely wet, despite a severe wind speed of 95 mph and horizontal rain.

No damage due to stagnant water on the parquet and carpet or wet wall.

WIND RESISTANCE CLASS 5 C – ACHIEVED THE HIGHEST CLASSIFICATION

Extremely robust, minimal distortion even under high wind pressure, excellent resistance to gusts, no damage to fastenings, providing greater safety for occupants.

THERMAL TRANSMITTANCE High-performance

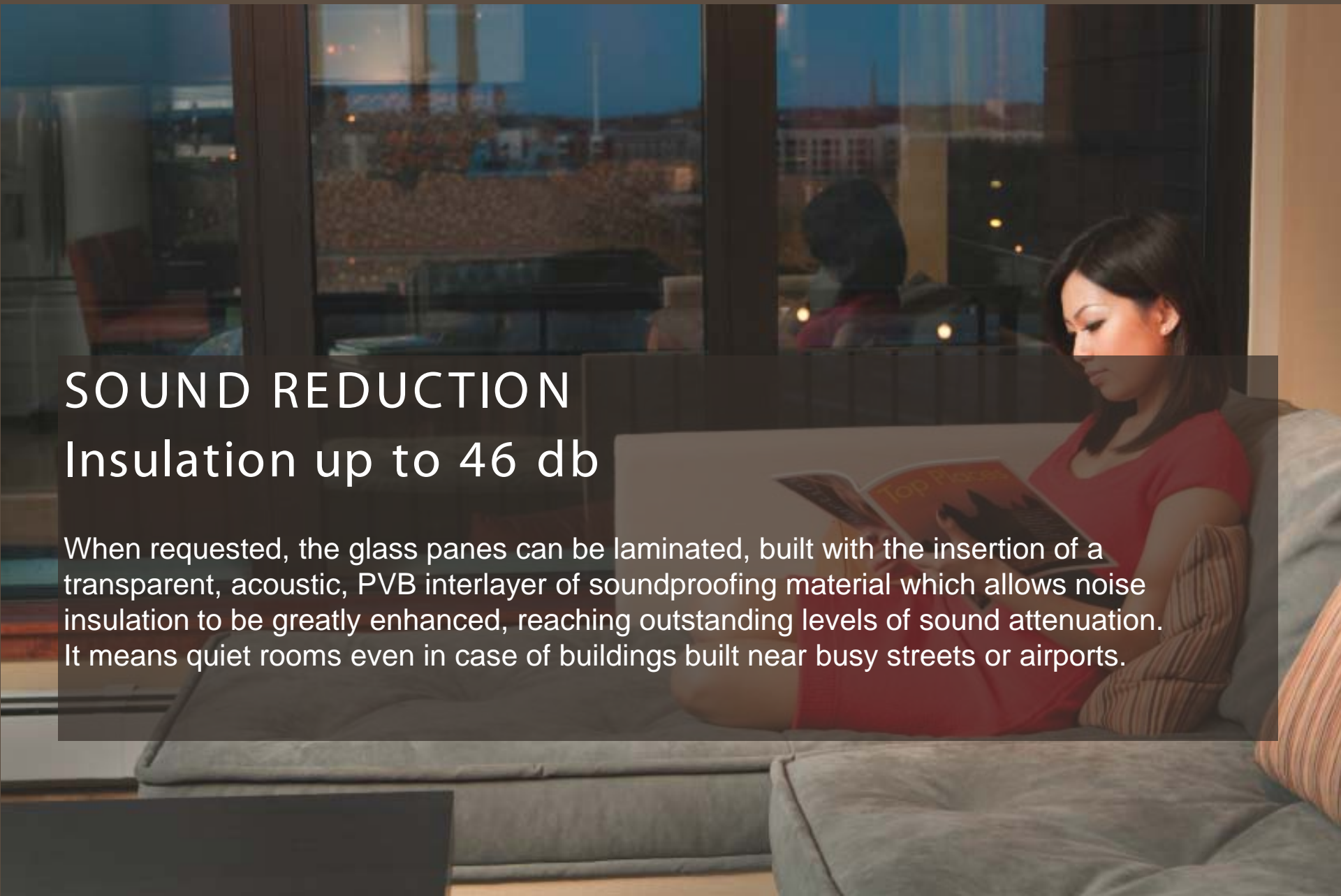
Windows suitable for both continental climate and very hot or cold climates.
Great energy saving and comfort inside the building.
Comply with any regulatory requirements and tax recovery.



SOUND REDUCTION

Insulation up to 46 db

When requested, the glass panes can be laminated, built with the insertion of a transparent, acoustic, PVB interlayer of soundproofing material which allows noise insulation to be greatly enhanced, reaching outstanding levels of sound attenuation. It means quiet rooms even in case of buildings built near busy streets or airports.





**Resistance to the load
of safety devices.**

Test passed!

Even in case of false manoeuvres,
incorrect or inappropriate use by
children, the door will always be safe.

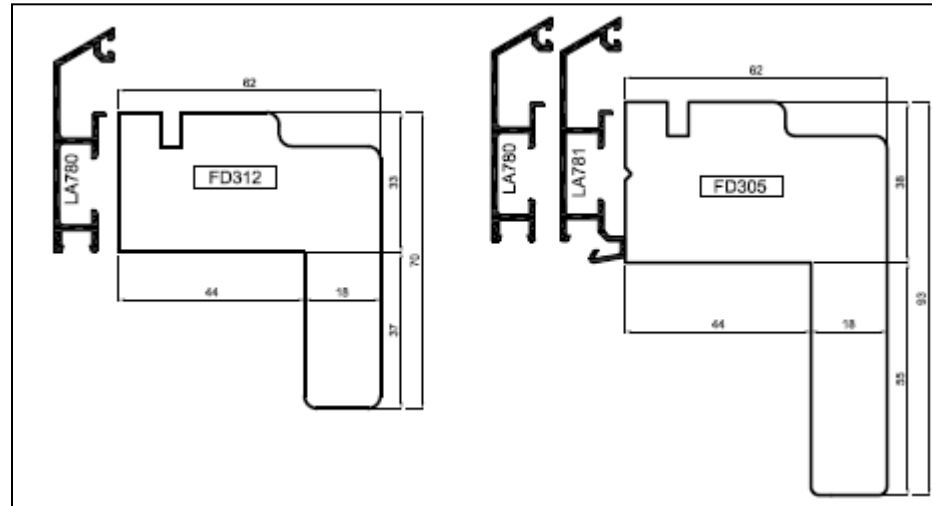


No harmful substances.

**Certified by independent
laboratories!**

Healthy environment and no danger to
those who live in the house

uni_one
renovation



Frame for the installation and renovation

Fast installation without dust and without breaking the wall.

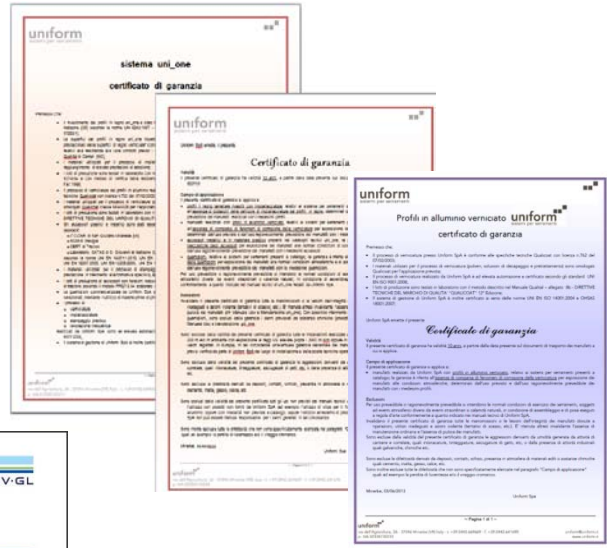
uni_one
certifications



System Certifications
UNI EN ISO 9001
OHSAS 18001

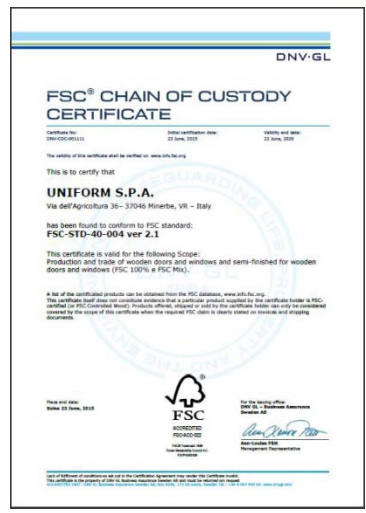


Certification of painting process
QUALICOAT SEASIDE



Aluminum Frames welded and painted
10 YEAR WARRANTY on corrosion.

Uni_one GARANZIA 10 ANNI On lining coating, absence of corrosion on paint, absence of mechanical break of accessories, absence of latching gaskets.



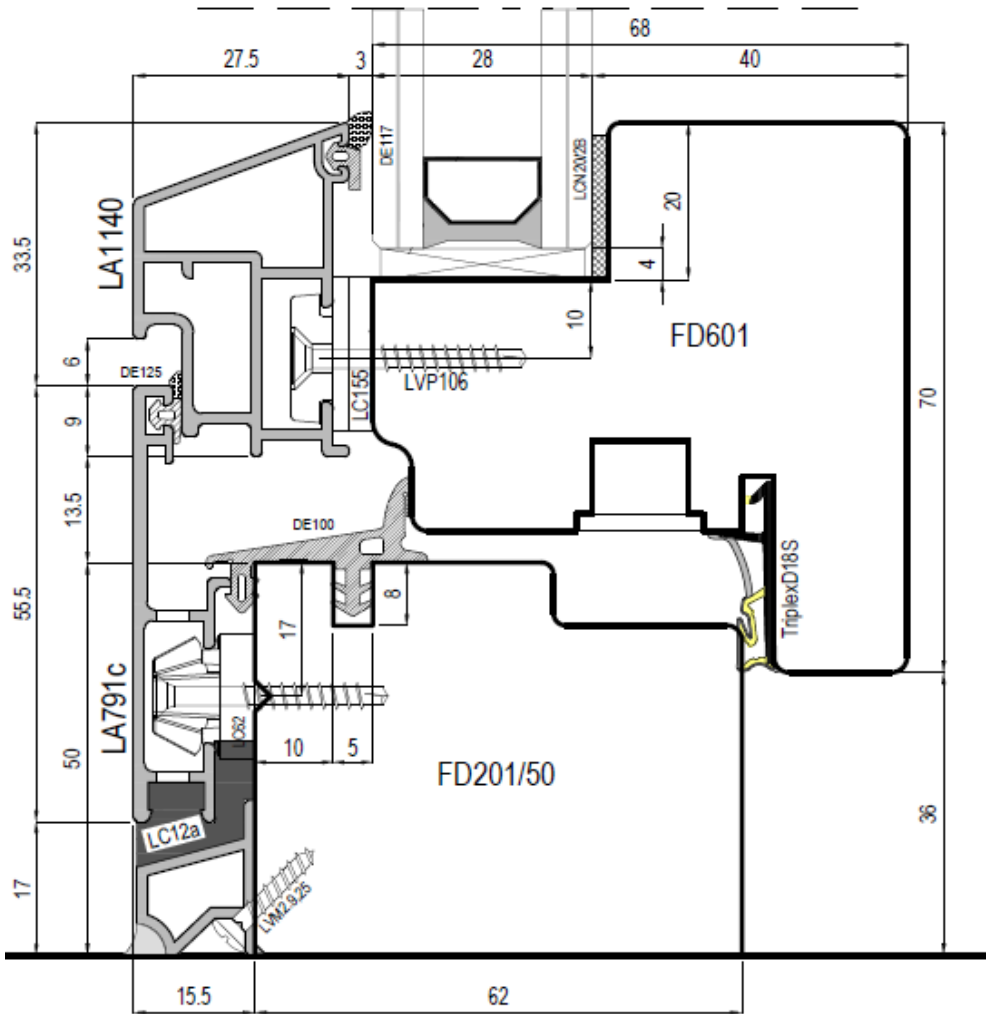
FSC (Chain of Custody) for uni_one windows. International Certified forest certification. Purpose: correct forest management and traceability of derived products.
FSC 100% and FSC MIX or FSC 90%

uni_one

Available typology

Dual corner option

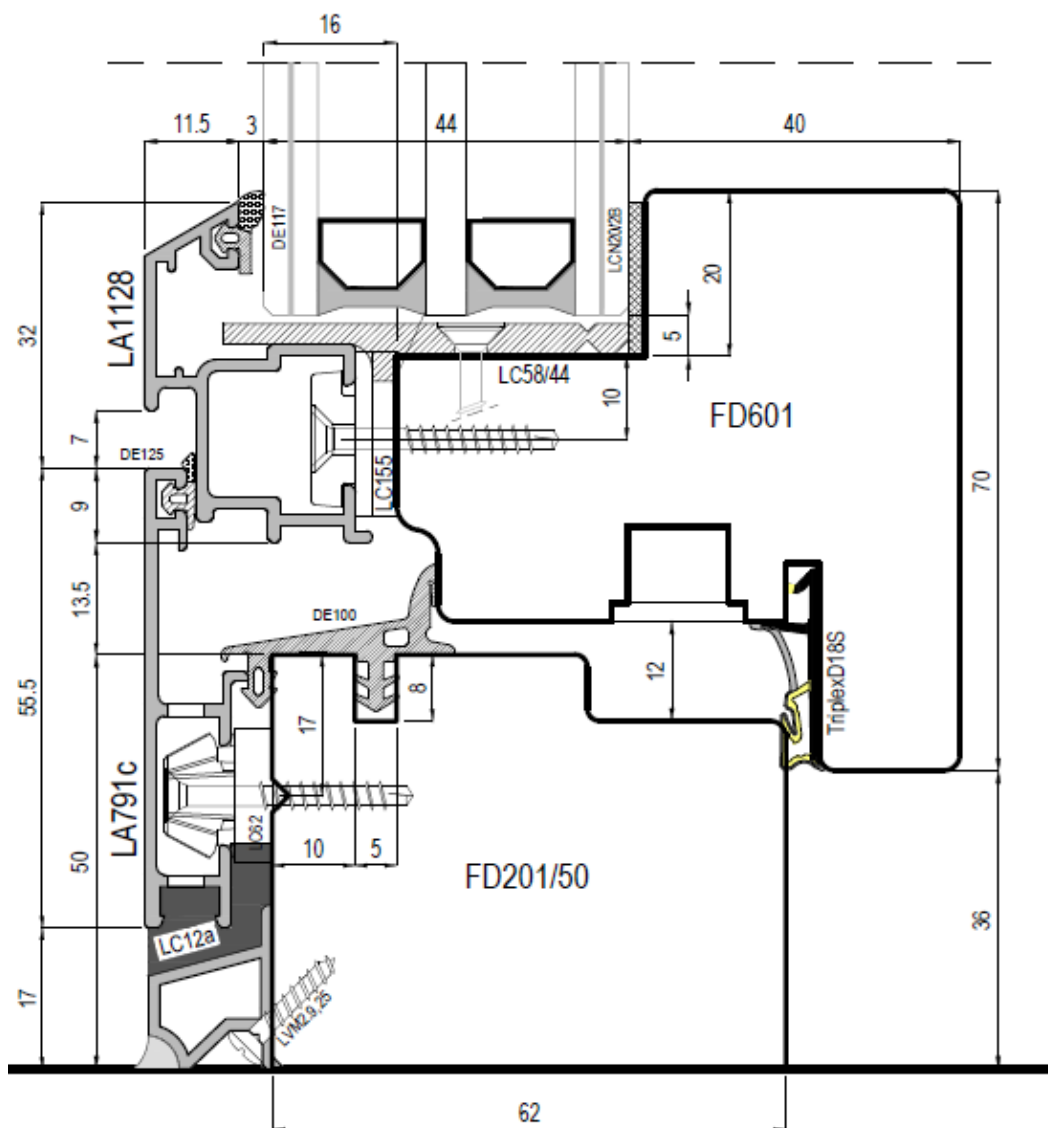




Uni_one COPLANAR sash profile DROP for glass thickness of 28 mm

Dual corner option

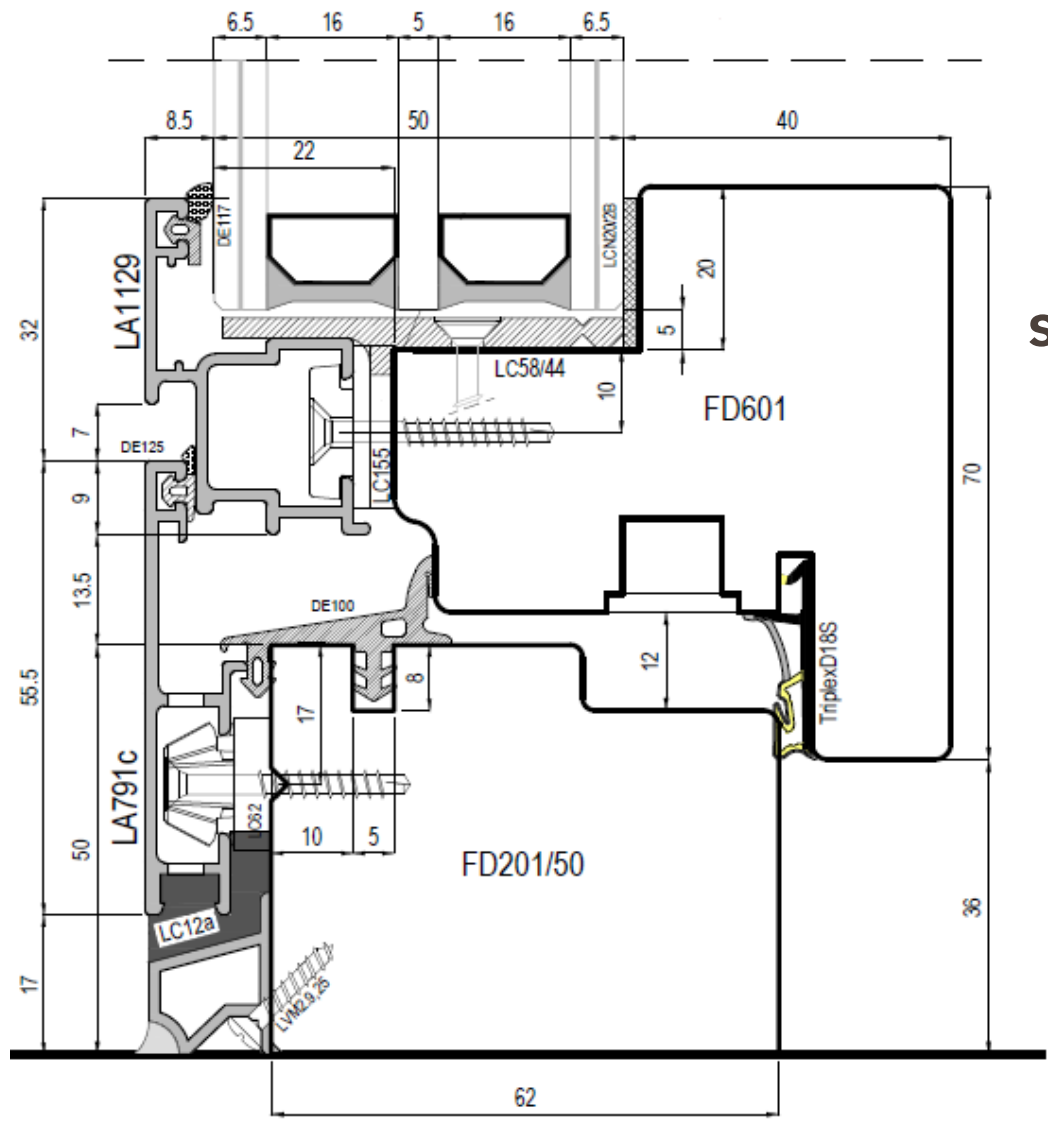




Uni_one COPLANAR
sash profile for glass
thickness of 44 mm

Dual corner option

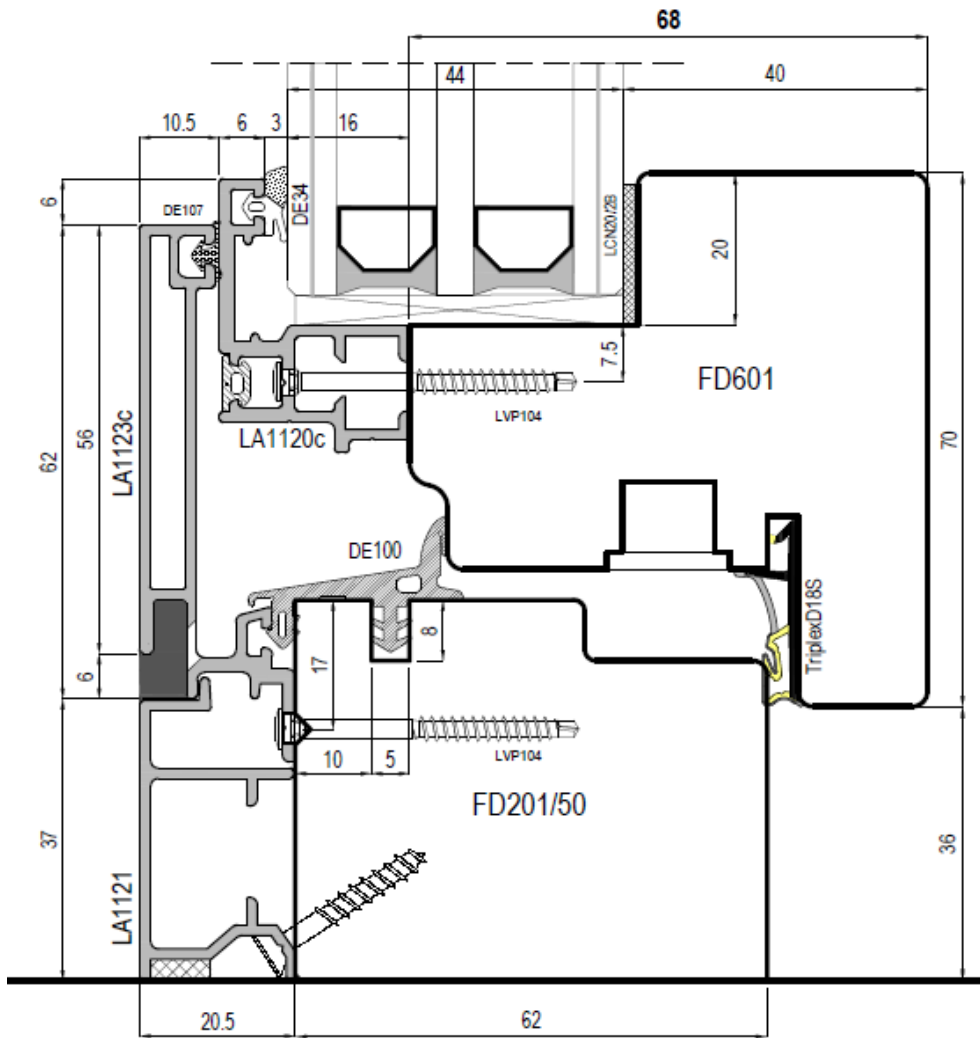




Uni_one COPLANAR
sash profile FLAT for glass
thickness of 50 mm

Dual corner option

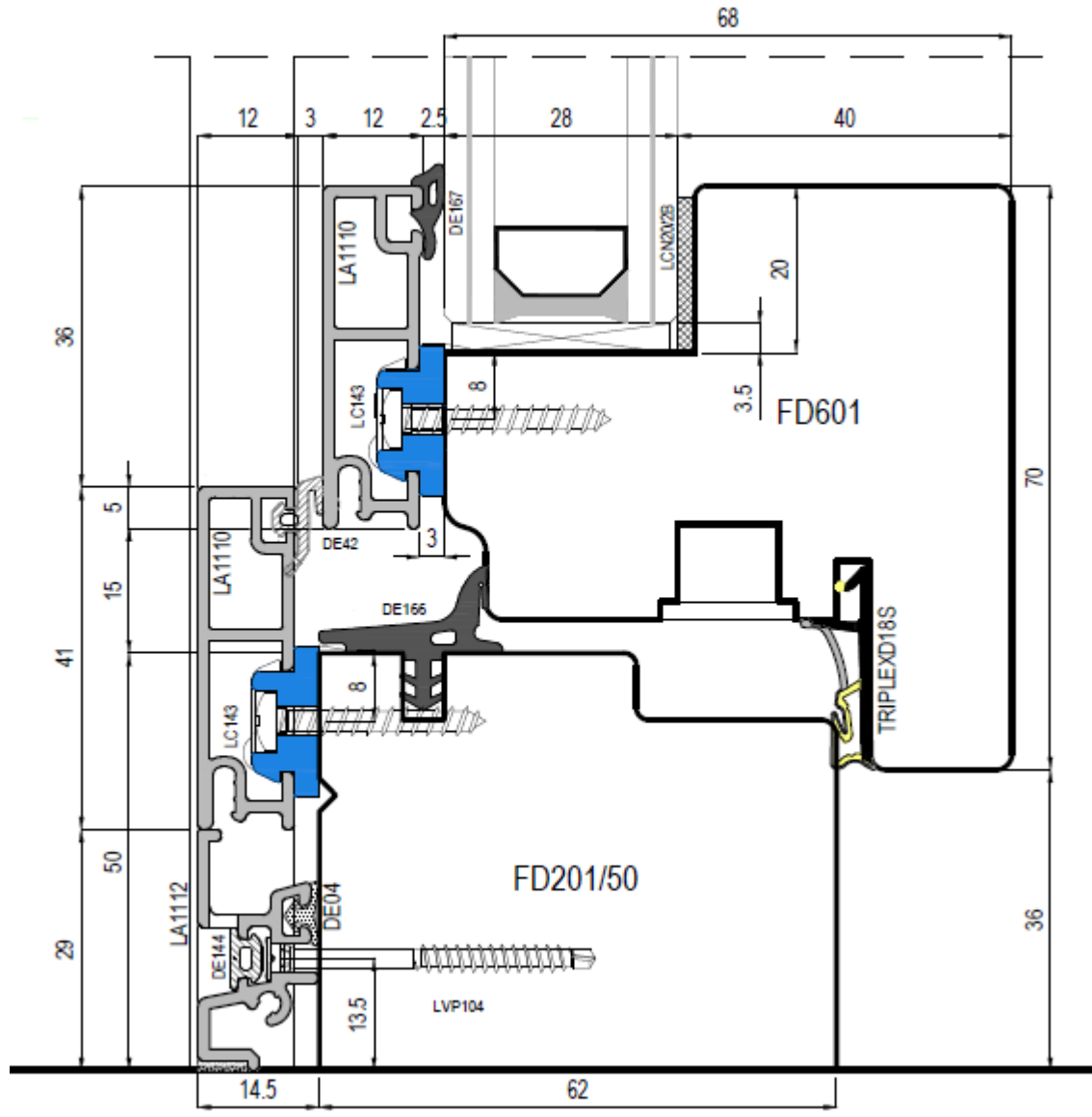




Uni_one SLIM

Dual corner option

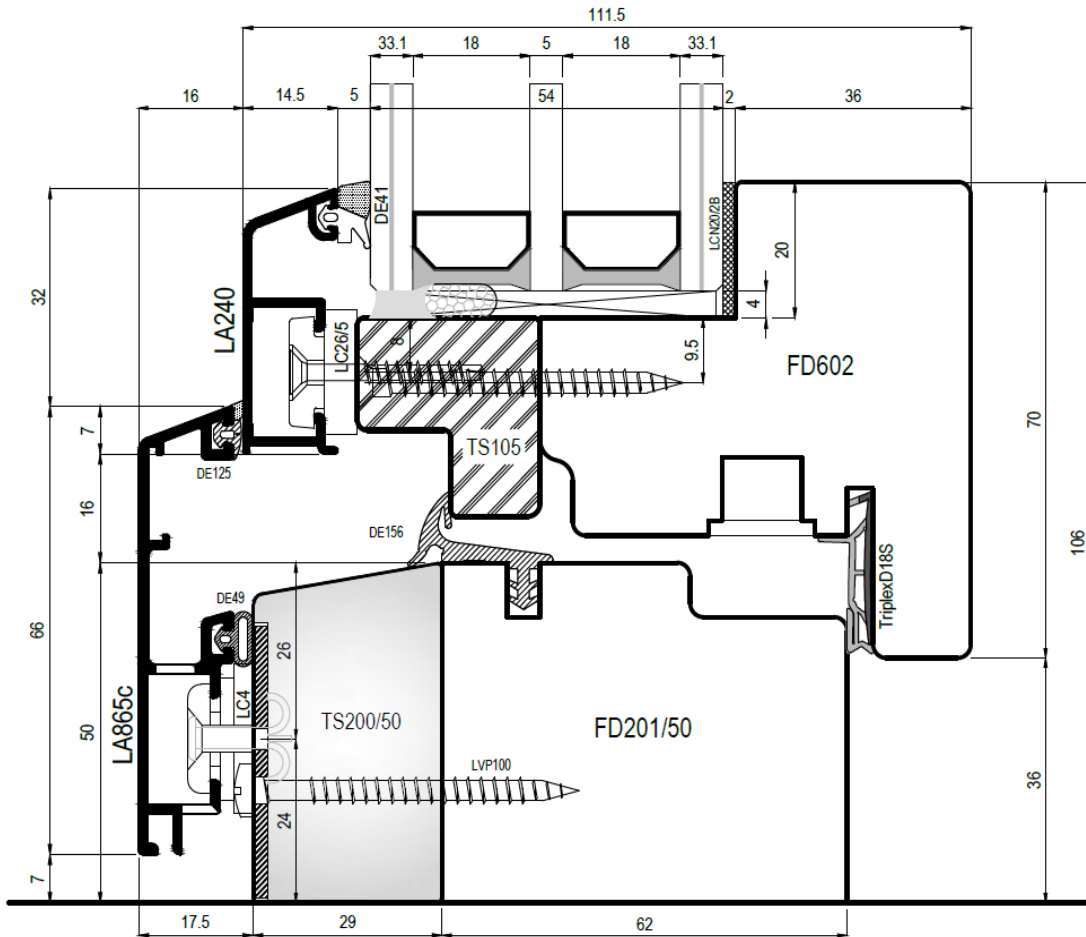




Uni_one SMART

Dual corner option





Uni_one TERMOSCUDO

Dual corner option



CERTIFICATE
Certified Passive House Component
Component ID: 0000047-0001 valid until 31st December 2017

Passive House Institute
Dr. Wolfgang Feist
14303 Darmstadt
Germany

phB
CERTIFIED COMPONENT
Passive House Institute

Category: Window frame
Manufacturer: Uniform S.p.A., Monforte (PR), Italy
Product name: Uni One Termoscudo

This certificate was awarded based on the following criteria for the warm, temperate climate zone:

Comfort: $U_{g, \text{ext}} + 0.95 \leq 1.00 \text{ W/(m}^2\text{K)}$
 $U_{\text{trans, max}} \leq 1.05 \text{ W/(m}^2\text{K)}$
 with $U_{g, \text{ext}} = 0.90 \text{ W/(m}^2\text{K)}$

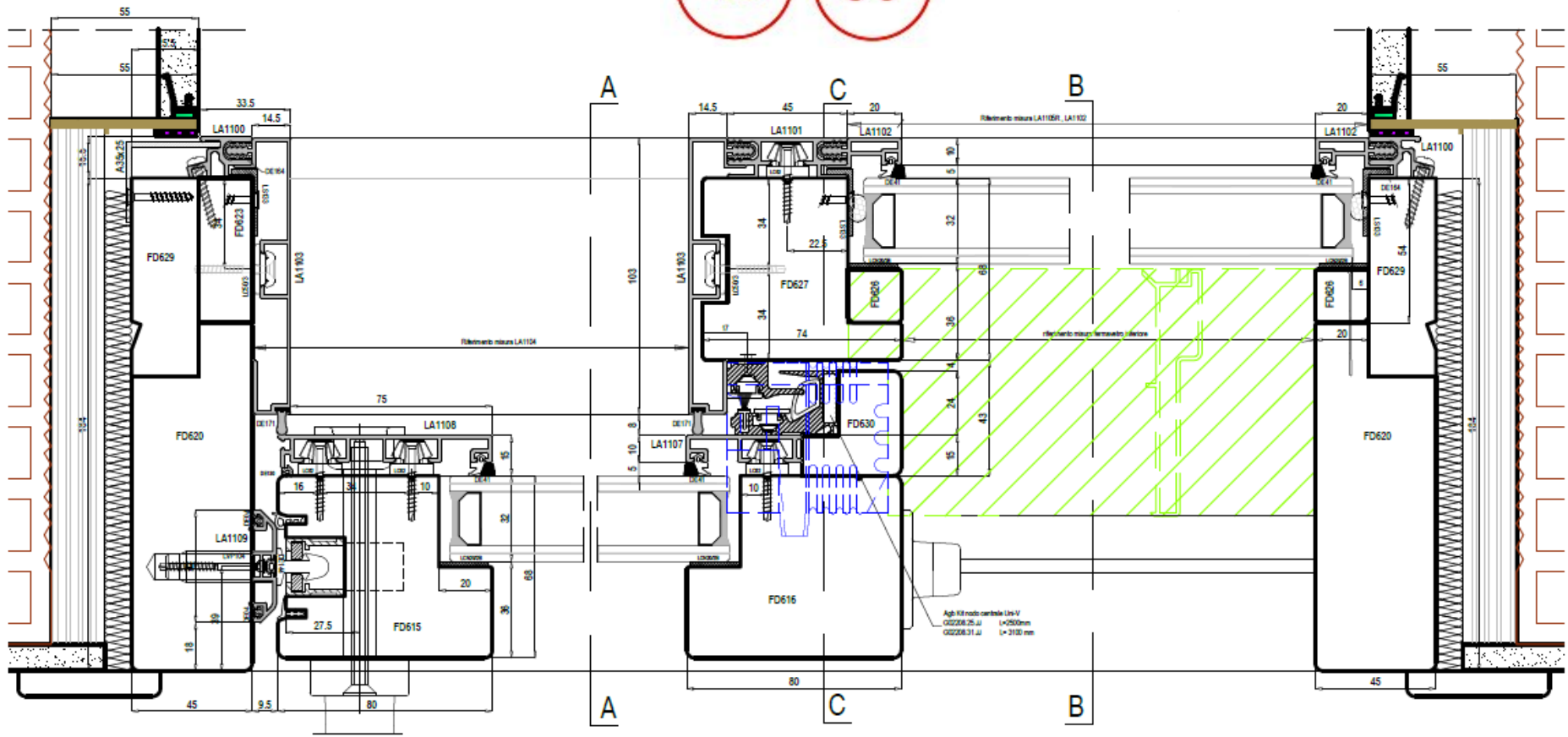
Hygiene: $f_{\text{acc,acc}} \geq 0.65$

www.passivehouse.com

CERTIFIED COMPONENT
Passive House Institute

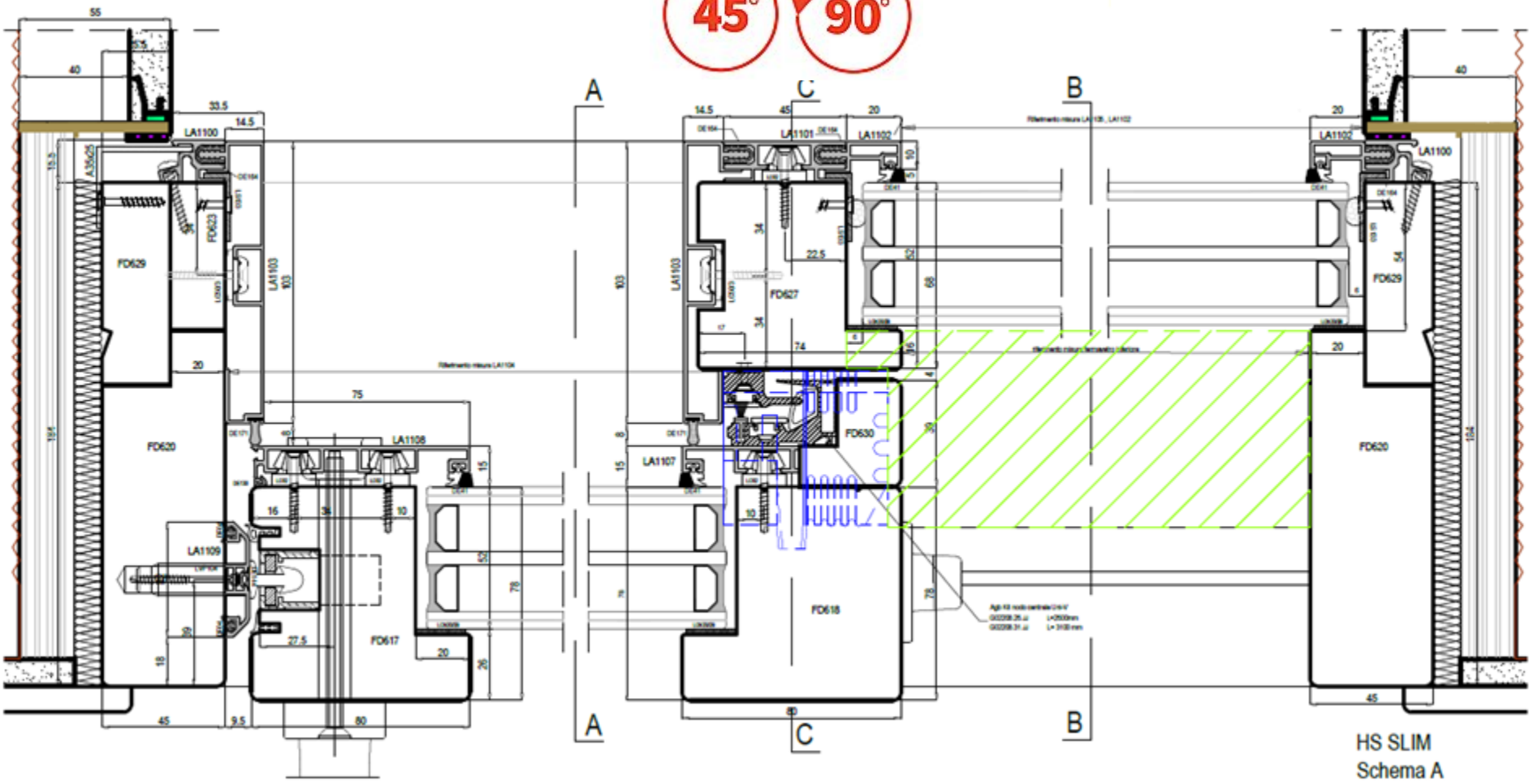
Uni_one HS SLIM 68 mm (Fixed glass installation from the outside)

Dual corner option



Uni_one HS SLIM 78 mm (Fixed glass installation from the outside)

Dual corner option



uni_one
conclusions

uni_one[■][■][■]

**It is the new window to
win together in the
modern market!**





**What is the difference between uni_one
and the other aluminum-wood windows?**



Uni_one represents **strength** because with the aluminum on the outside is practically indestructible



Uni_one represents **efficiency** because it is certified with the highest performance



Uni_one represents **elegance** because it has
avant-garde shapes and materials



Uni_one represents **light** because it has a reduced section of sash to give more space to the glass



And then ... inside uni_one is beating a **wood heart!!!**

**We work together to build better
windows ...**



... and a better world.

uni_one 